



## Series C55 DC-Link Polypropylene Capacitors

**Features:** Flame retardant to UL94, extended metalized film, dry connection, plastic casing, tinned copper nut terminals, stable performance, high reliability, small volume, convenient installation.

**Applications:** Single IGBT switch components of small current welder < 400A

### Specifications

**1) Operating Temperature**

-40°C to 85°C.

**2) Capacitance**

2 x 10 $\mu$ F; 2 x 16 $\mu$ F; 2 x 30 $\mu$ F.

**3) Rated Voltage**

400 VDC.

**4) Tolerance**

$\pm$ 5%.

**5) Test Voltage Between Terminals**

650V (DC) 60s

**6) Test Voltage Between Terminals and Case**

2000VAC 10s.

**7) Dissipation Factor**

0.1% max at 25°C $\pm$ 5°C

**8) Insulation Resistance**

5000 M $\Omega$ · $\mu$ F min, at 100 VDC, 25°C $\pm$ 5°C, 60s.

**9) Effective Current ( $\Delta T < 25^\circ\text{C}$ )**

20A; 30A; 40A.

**10) Equivalent Series Resistance**

<2.3m $\Omega$  ; <1.8m $\Omega$  ; <1.6m $\Omega$ .

**11) Stray Inductance**

$\leq$ 20nH

**12) Life Expectancy**

200000h at rated DC voltage and 70°C.

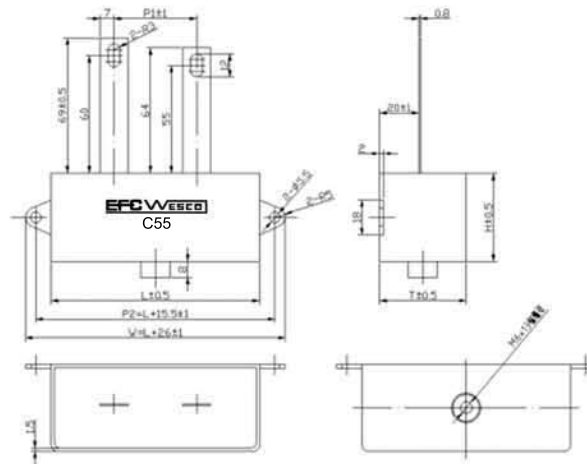
**13) Reference Standards**

GB/T 17702, IEC 61071

ase  
C58 - Round Plastic Shell

# C55 Plastic Casing

# DC Link Polypropylene Capacitors



## Dimensions and Ratings

Cap.	<b>400 VDC</b>						
μF	Part #	Dimension (mm)			(mm)		Lead Type
		L	W	H	P1	P2	
2 x 10	C55SB4012x10KT#	76.0	31.0	35.5	26.7	91.5	Tinned Copper Lug
2 x 16	C55SB4012x16KT#	105.5	43.0	32.0	42.0	120.5	Tinned Copper Lug
2 x 30	C55SB4012x30KT#	105.5	43.5	45.0	28.0	120.5	Tinned Copper Lug