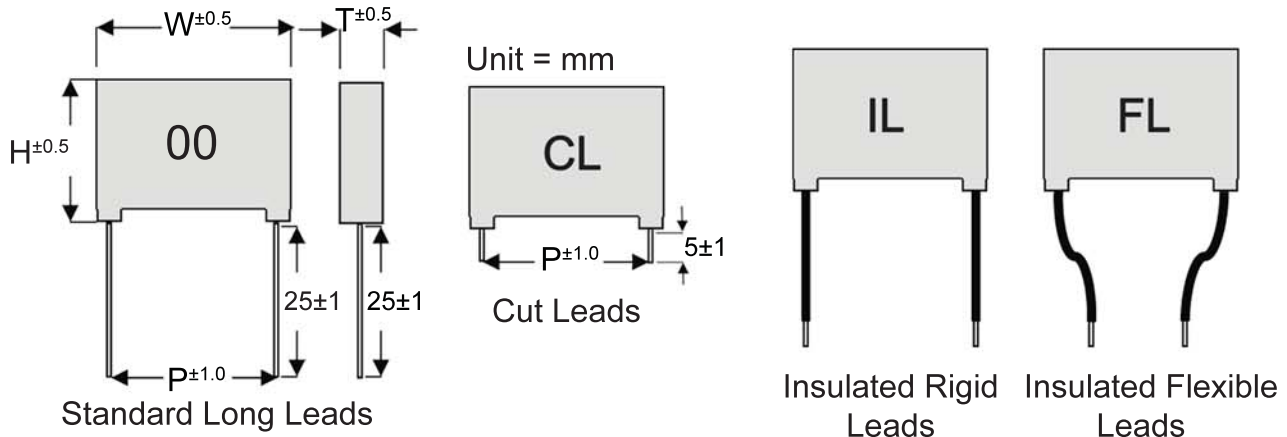


EMI Suppression Capacitors



Part Number Nomenclature

M K P X 1 4 4 0 1 0 5 K 2 7 H 0 0

Type:
Metallized
Polypropylene

Rated Voltage (AC):
275 = 250 / 275
300 = 250 / 300
310 = 275 / 310
440 = 440

Class:
X1
X2
Y2

Capacitance Code (pF):
First two digits are
significant digits.
Third digit is number
of zeros.

Ex: 105 = 1,000,000pF = 1 μ F

Tolerance Code:
J - $\pm 5\%$
K - $\pm 10\%$
M - $\pm 20\%$

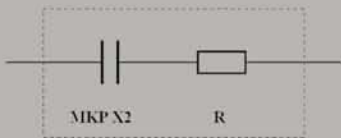
Color:
Y - Yellow
H - Grey
G - Green
B - Blue
K - Black

Pitch (mm):
07 = 7.5
10 = 10.0
15 = 15.0
22 = 22.5
27 = 27.5
37 = 37.5

Lead Code:
00 - Standard Long
CL - Cut
IL - Insulated Rigid
FL - Insulated Flexible



Internal Connection



Series MKP RCS X2 Class 250 VAC / 275 VAC

Metallized Polypropylene dielectric capacitor and series with resistor packaged in a UL94V-0 plastic case and epoxy resin. Features include: Low DF & excellent high frequency characteristics, self-healing property and small size, withstand high pulse voltage and interference suppression, and excellent temperature characteristics. Applications include: Relay connector protective, spark and over voltage absorb circuits, and high frequency and high pulse voltage electronic circuits.



Specifications

Temperature Range
-40°C - +100°C.

Capacitance Tolerance
±10%, ±20%

Insulation Resistance
C ≤ 0.33µF IR ≥ 15000MΩ
C > 1.0µF IR > 5000S
at 20°C/100VDC/60s

Rated Voltage
250 VAC / 275 VAC.

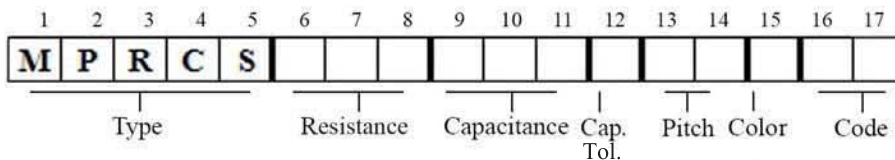
Withstand Voltage
2200 VDC 2S

Pulse Voltage
U_p 2500VDC

Capacitance Range
X2: 0.01µF to 1µF
at 20°C/1KHz

Dv/Dt
100V/µs.

Cap.	250 VAC / 275 VAC						
µF	Part #	Ω	P	W (max)	H (max)	T (max)	LD (dia)
0.01	MPRCS100103-15-00	100	15.0	18.0	11.0	5.0	0.6
0.033	MPRCS100333-15-00	100	15.0	18.0	11.0	5.0	0.6
0.047	MPRCS100473-15-00	100	15.0	18.0	14.5	7.5	0.6
0.047	MPRCS100473-22-00	100	22.5	26.5	15.0	6.0	0.6
0.1	MPRCS100104-22-00	100	22.5	26.5	15.0	6.0	0.6
0.22	MPRCS100224-22-00	100	22.5	26.5	17.0	8.5	0.6
0.33	MPRCS100334-22-00	100	22.5	26.5	17.0	8.5	0.6
0.47	MPRCS100474-27-00	100	27.5	32.0	20.0	11.0	0.6
0.68	MPRCS100684-27-00	100	27.5	32.0	20.0	11.0	0.6
0.68	MPRCP100684-27-00	100	27.5	32.0	20.0	11.0	0.6
0.82	MPRCS100824-27-00	100	27.5	32.0	23.0	13.0	0.6
1.0	MPRCS100105-27-00	100	27.5	32.0	23.0	13.0	0.6



J	±5%	Y	Yellow	B	Blue
K	±10%	H	Grey	K	Black
		G	Green		